

Polygon

a closed figure with 3 or more sides

Congruent

same shape, same size

Regular Polygon

all sides and angles are congruent

Jan 7-7:40 AM

Parallel

lines that never intersect and always stay the same distance apart

Parallelogram

opposite sides are parallel

Jan 7-7:43 AM

Perimeter

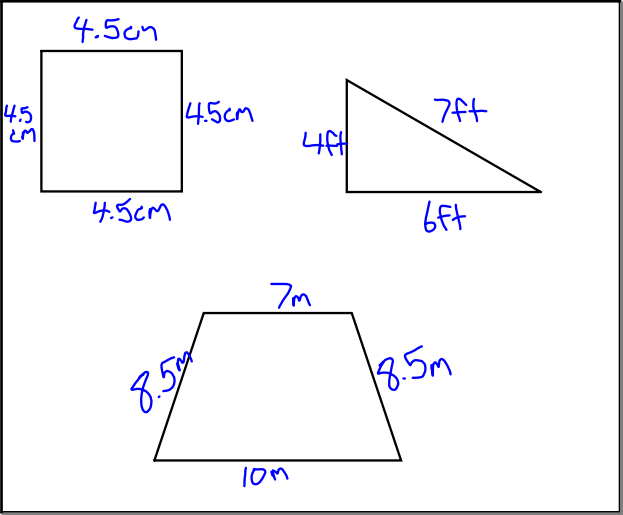
the distance around a figure

How to find perimeter

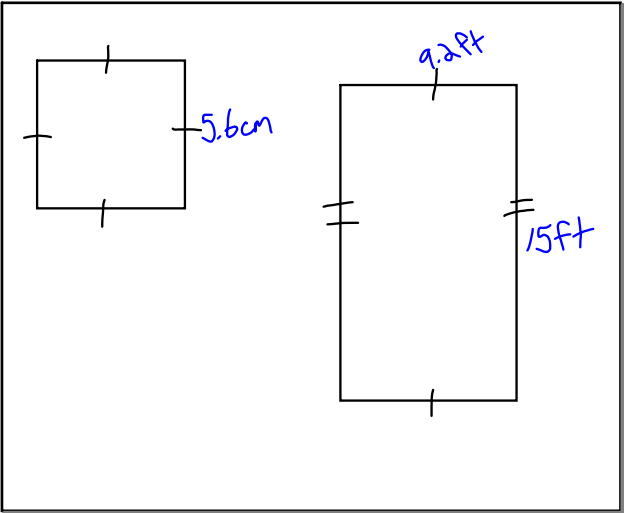
add up ALL the sides

\*\*Remember your labels!!!

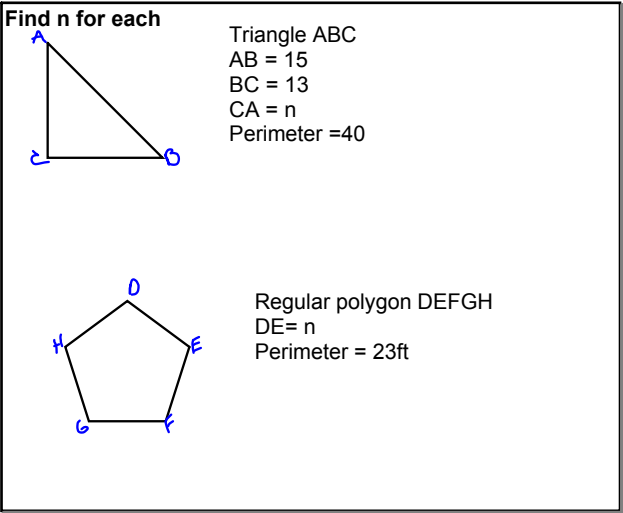
Jan 7-7:44 AM



Jan 7-7:46 AM



Jan 7-7:49 AM



Jan 8-7:46 AM

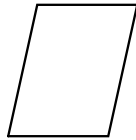
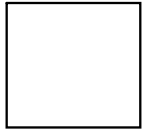
### Area

the space inside a figure

#### How to find the area of a parallelogram

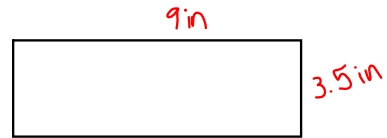
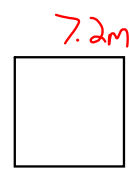
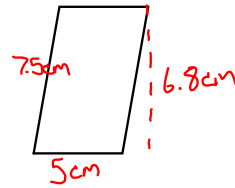
base x height

\*\*\*remember your squared labels



Jan 8-3:18 PM

#### Find the area of each.



Jan 8-3:21 PM

#### How to find area of a triangle

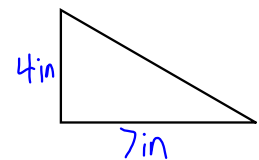
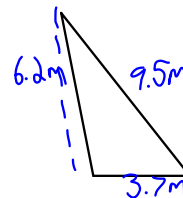
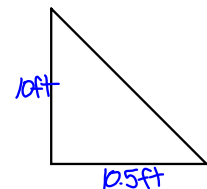
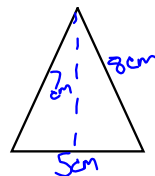
base x height x 1/2

OR

base x height ÷ 2

\*\*Remember your squared labels!!!

#### Find the area of each triangle



Jan 10-7:28 AM

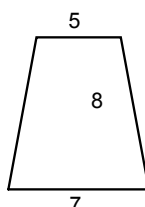
Jan 10-7:31 AM

#### How to find area of a trapezoid

$$\frac{(b_1 + b_2)}{2} h$$

- add the parallel bases together
- divide by 2
- multiply by the height

\*\*Remember your squared labels!!!



Feb 28-1:22 PM